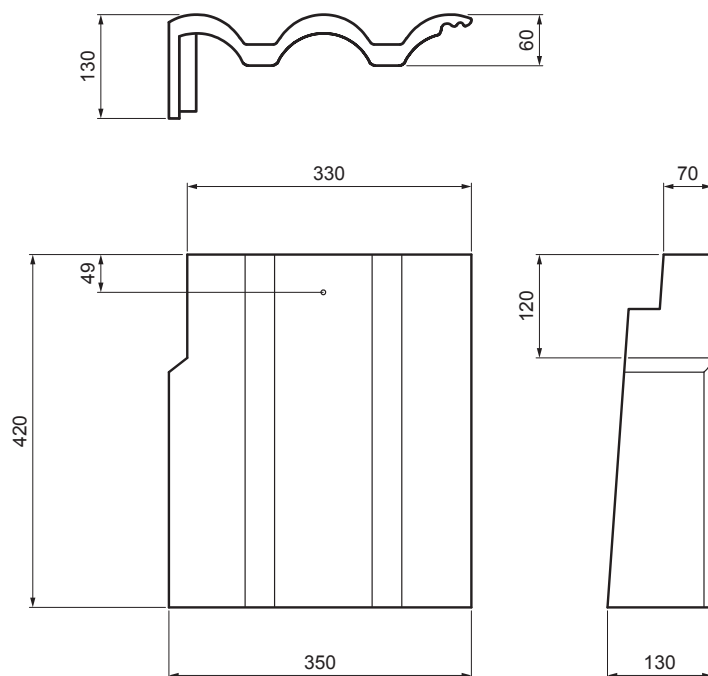
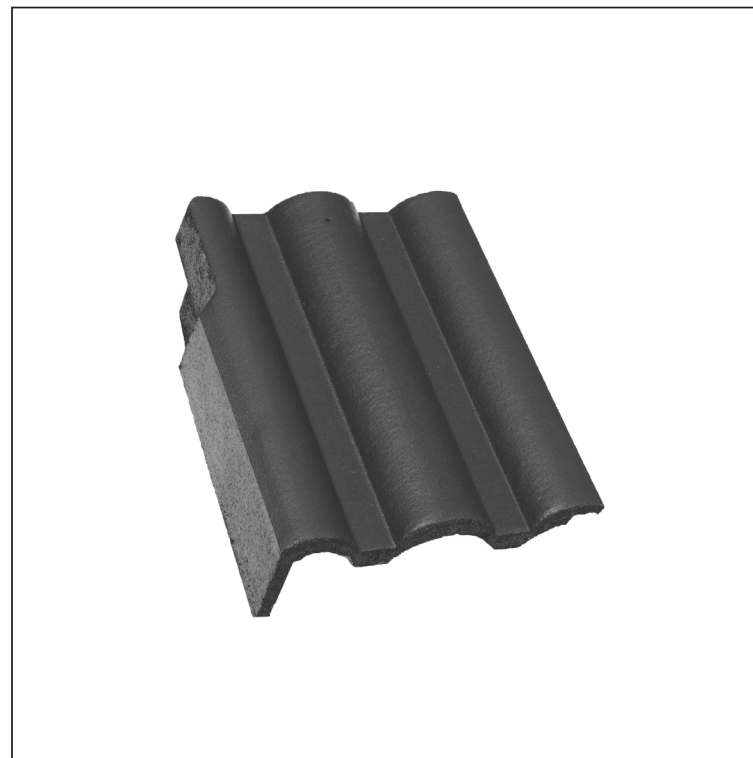


TEHNIČKI LIST




LIJEVI RUBNI CRIJEP DANUBIA



TER-DANI TS SKKRL




TS Boja : Tamno siva
Površinski sloj: INOVA

| | | | | |
|------------------|-----------------------------|-------|--|---|
| INDEX | ZAMIJENA | DATUM | POTPIS |   |
| VRSTA MATERIJALA | DIMENZIJA - POLUPROIZVOD | | TEŽINA kg | |
| POMOĆNA OPREMA | IZRADIO Ing. Kluska M. | | STN | OZNAKA ZA SORTIRANJE |
| TESTIRAO | TEHNOLOG | | BILJEŠKA | REDNI BROJ POZICIJE |
| NAZIV PROIZVODA | Lijeви rubni crijep DANUBIA | | STARI NACRT | BROJ NACRTA |
| Broj stranica | | | TER-DANI TS SKKRL | |
| | | | Stranica  | |

Izrađeno: 02.06.2026 19:15:39

Podaci su podložni tehničkim promjenama

| Tehnički parametri | |
|---|---------------------------------|
| Dimenzije | 350 x 420 mm |
| Pokrivna širina | 350 – 420 mm |
| Potrošnja elementa | 2,9 – 3,3 kom/cca duž. m |
| Mogućnost primjene | pri razmaku letava 30,5 – 34 cm |
| Težina | 6,90 kg/kom |
|  Pakiranje | 28 kom |